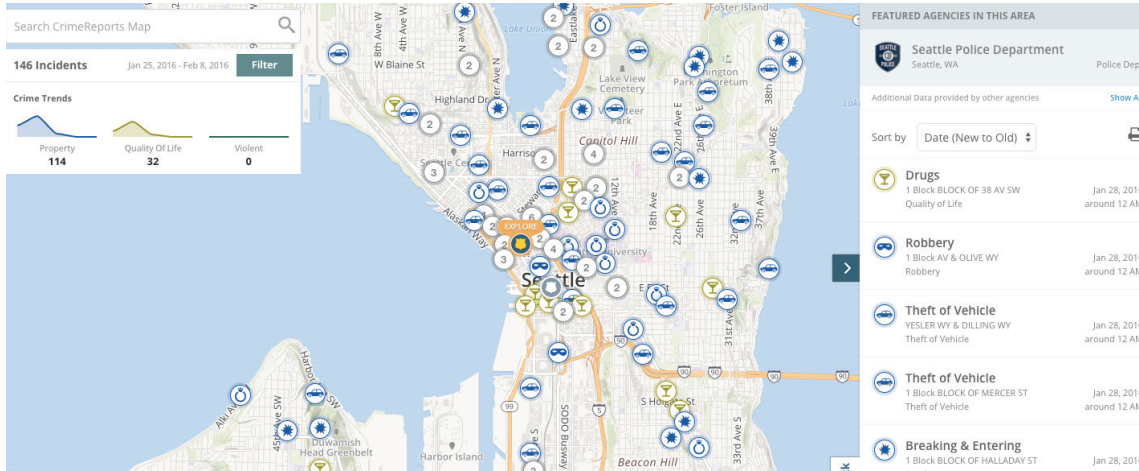




CRIMEREPORTS powered by Socrata

INFORM, BUILD TRUST AND ENGAGE WITH YOUR COMMUNITY



CrimeReports helps law enforcement agencies promote two-way dialogue with their community, and improve public and media perception by proactively sharing local crime information and providing visibility to agency operations. Crime data from Records Management or Computer-Aided Dispatch systems (RMS/CAD) is automatically published in an online, interactive map. Transparent and timely communication increases public confidence and reduces the need to fulfill individual information requests saving your agency time and money.

KEEP YOUR COMMUNITY INFORMED AND ENGAGED

An interactive map allows citizens to easily understand where recent crimes have occurred and how crime reports are trending. Citizens can sign up to receive local agency alerts, as well as customized daily, weekly, or monthly updates on a variety of crime types.

INCREASE INFORMATION SHARING WITH ANONYMOUS TIPPING AND CAMERA REGISTRATION

Citizens can send tips related to crimes already listed on the map to aid investigations, as well as for non-reported crimes. And while tips are anonymous and encrypted, agencies can communicate with the tipster through email to gain further information.

Enable willing citizens and businesses to register the location of fixed personal and commercial video cameras. Use with CommandCentral applications to view the location of registered cameras and quickly contact the person/business when there is a crime to aid in emergency response and investigations.

SIMPLE INTEGRATION

CrimeReports integrates with most RMS and CAD platforms. Using automated sync functionality, the information on the CrimeReports map is always current and up-to-date.

BENEFITS



Citizen

Increased awareness of local crime activity and increased confidence in law enforcement activities.



Media

Obtain easy access to reliable crime information for accurate reporting about public safety.



Officer

Increased awareness of crimes and trends within patrol areas.



Chief

Broader visibility of crime trends in the community and surrounding areas to better collaborate with neighboring jurisdictions.

VISIT THE SITE:

www.crimereports.com

Motorola Solutions has joined forces with Socrata, the leader in government solutions that enable transparency and citizen engagement, to bring agencies an enhanced crime mapping tool that supports community-led policing and cross-jurisdictional collaboration.

Learn more about Socrata:

www.socrata.com



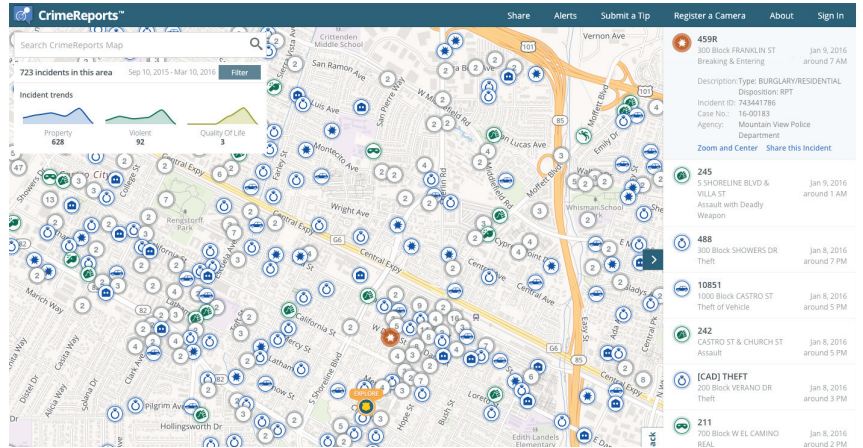
Socrata

TWO WAYS TO CONNECT WITH YOUR COMMUNITY

CrimeReports provides a free subscription for agencies to establish a foundation for community engagement. CrimeReports Plus subscription empowers agencies to take an even stronger approach with more data, more analytics, and the opportunity to promote the agency's profile.

CRIMEREPORTS

- **Data Feed:** Automatically publish the most up-to-date crime information for up to the last 6 months.
- **Incident Details:** Provide the public with detailed information about crimes and 9-1-1 calls for increased agency transparency.
- **Sex Offender Data:** Increase awareness of sex offender locations through federally-syndicated offender information.
- **Crime Trending Analytics:** Display basic trends over time that show if crime has been increasing or decreasing.
- **Mobile Application:** Citizens can download the CrimeReports mobile application (iOS or Android) to get instant alerts and submit tips wherever they are.

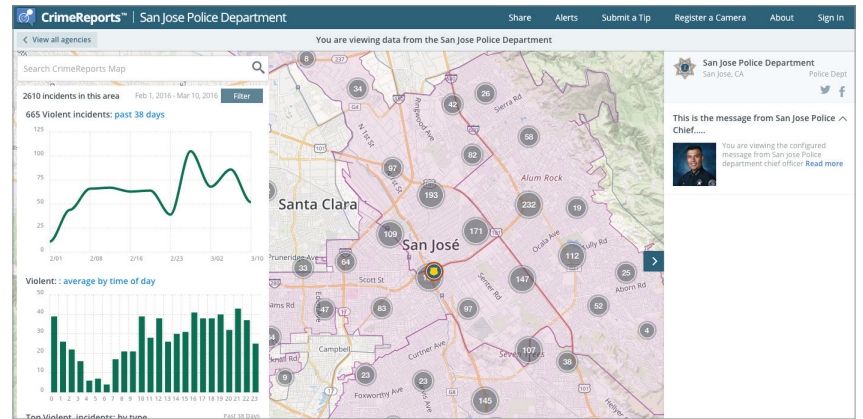


CrimeReports

CRIMEREPORTS PLUS

Includes all of the features in CrimeReports along with:

- **Greater Data Capacity and Daily Data Feed:** Display up to the last 24 months of data with daily updates.
- **Contextualized Analysis:** Upload shapefiles to define neighborhoods, districts, or other areas to better understand the data.
- **Expanded Analytics:** More charts show detailed crime trends for up to 24 months.
- **Social Media Engagement:** Share your agency's website and social media channels to build rapport with the public.
- **Agency Branding:** Create a branded experience featuring your agency logo and header colors, and focused views displaying only data from your agency.
- **Embed Crime Maps:** Easily copy the embed code and publish the interactive map to further share CrimeReports across other agency or community websites.



CrimeReports Plus

- **Anytime Data Access API:** Use the Socrata Open Data API for advanced, real-time analysis or to easily integrate data into other business intelligence reporting tools.

FOR MORE CRIMEREPORTS INFORMATION, CONTACT SOCRATA:

Main: 1-206-340-8008 Support: 1-888-997-6762 Email: publicsafety@socrata.com

For more information about Citizen Engagement and Smart Public Safety Solutions, visit motorolasolutions.com/spss.

Motorola Solutions, Inc. 1301 East Algonquin Road Schaumburg, Illinois 60196, U.S.A. 800-367-2346 motorolasolutions.com

MOTOROLA, MOTO, MOTOROLA SOLUTIONS and the Stylized M Logo are trademarks or registered trademarks of Motorola Trademark Holdings, LLC and are used under license. All other trademarks are the property of their respective owners. © 2016 Motorola Solutions, Inc. All rights reserved. 03-2016